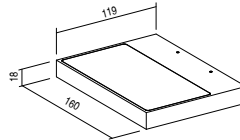
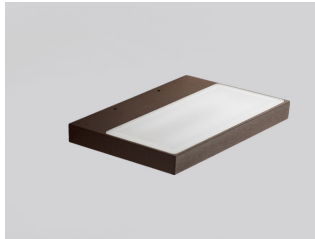


NEW

DERO L - SINGLE EM. 230V_{ac}IP65 IK06 CE   TIPOLOGIA / *TPOLOGY*

Applique

POSIZIONE INSTALLATIVA | *INSTALLATION POSITION*A parete | *Wall mounting*AMBIENTE INSTALLATIVO | *INSTALLATION LOCATION*Interno ed esterno | *Indoor and outdoor*

DERO L - SINGLE EM.

16W

 kg 0,61

CARATTERISTICHE ELETTRICHE | ELECTRICAL FEATURES

POTENZA ASSORBITA POWER CONSUMPTION	16W
ALIMENTAZIONE POWER SUPPLY	230Vac
FREQUENZA FREQUENCY	50/60 Hz
ALIMENTATORE POWER SUPPLY UNIT	Integrato (con elettronica 230Vac) <i>integrated</i> (with 230Vac Electronic)
COLLEGAMENTO CONNECTION	Tensione di rete <i>Mains voltage</i>

CARATTERISTICHE ILLUMINOTECNICHE | LIGHTING FEATURES

COLORE LED LED COLOUR	2700K, 3000K, 4000K
INDICE RESA CROMATICA CRI CRI	>80 (2700K, 3000K, 4000K)
BINNING	3 step MacAdam <i>3 MacAdam steps</i>
OTTICHE OPTICS	Diffused
FLUSSO REALE EMESSE - 3000K REAL OUTPUT FLUX	16W 1316lm
DURATA MEDIA LED AVERAGE LED LIFE	50.000h L80 B10

CARATTERISTICHE MECCANICHE | MECHANICAL FEATURES


PESO WEIGHT	Kg 0,61
FINITURE FINISHES	Bianco txt, Grigio txt, Nero txt, Corten, Antracite txt, Sand <i>T xt White, txt Grey, txt Black, Corten, txt Anthracite, Sand</i>
INSTALLAZIONE INSTALLATION	A parete con basetta di fissaggio (inclusa) e viti (non incluse) <i>On wall with mounting base (included) and screws (not included)</i>
MATERIALE MATERIAL	Corpo in alluminio anticorodal, diffusore in PMMA opalino <i>Anticorodal aluminium body, opal PMMA diffuser</i>

CARATTERISTICHE GENERALI | GENERAL FEATURES

TEMPERATURA DI ESERCIZIO OPERATING TEMPERATURE	-10°C +45°C
GRADO DI PROTEZIONE INGRESS PROTECTION	IP65
GRADO DI RESISTENZA IMPACT RESISTANCE	IK06
GLOW WIRE TEST GLOW WIRE TEST	960°C
TEMPERATURA MASSIMA APPARECCHIO MAX. TEMPERATURE OF FIXTURE	40° @ Ta = 25°
CLASSE DI ISOLAMENTO APPLIANCE CLASS	I
CALPESTABILE WALKOVER	No
CARRABILE DRIVE OVER	No
SICUREZZA STANDARD STANDARD SAFETY	/
SICUREZZA FOTOBIOLOGICA PHOTOBIOLOGICAL SAFETY	GR1

DERO L - SINGLE EM. 230V_{ac}

ACCESSORI | ACCESSORIES

CODICE / CODE	CP001
TIPOLOGIA / TYPOLOGY	Copertura per foro a parete <i>Wall hole cover</i>  kg 0,02
MATERIALE / MATERIAL	Acciaio inox <i>Stainless steel</i>

